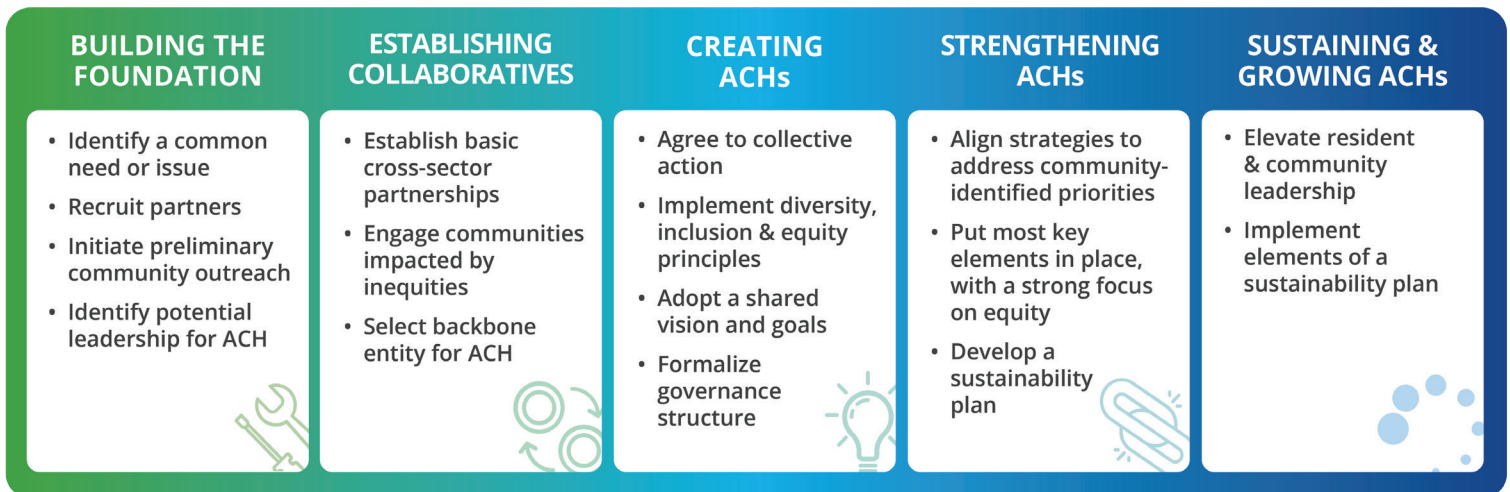


### Developing an ACH is an iterative process involving multiple stages and interdependent steps.

To help a collaborative chart its progress, CACHI has developed a *Developmental Pathway* based on the learnings and experience gained from the first six years of the initiative:



While one element may logically flow to the next, this process is fluid. ACHs are complex and can be influenced by countless factors, many of which will be out of leaders' hands. The goal is to continuously grow stronger and more equitable, while evolving to adapt to the latest challenges and opportunities.